



Transmission & Final Drive Parts

SECTION J

TRANSMISSION & FINAL DRIVE PARTS

FINAL DRIVE PARTS

CASE	J1 - J4
JOHN DEERE	J5, J6
DRESSER	J3, J6
ALLIS CHALMERS	J6

BEARING KITS

J7

TORQUE CONVERTERS

CASE	J8, J9
JOHN DEERE	J10
DRESSER	J10
CAT	J10

SHUTTLES

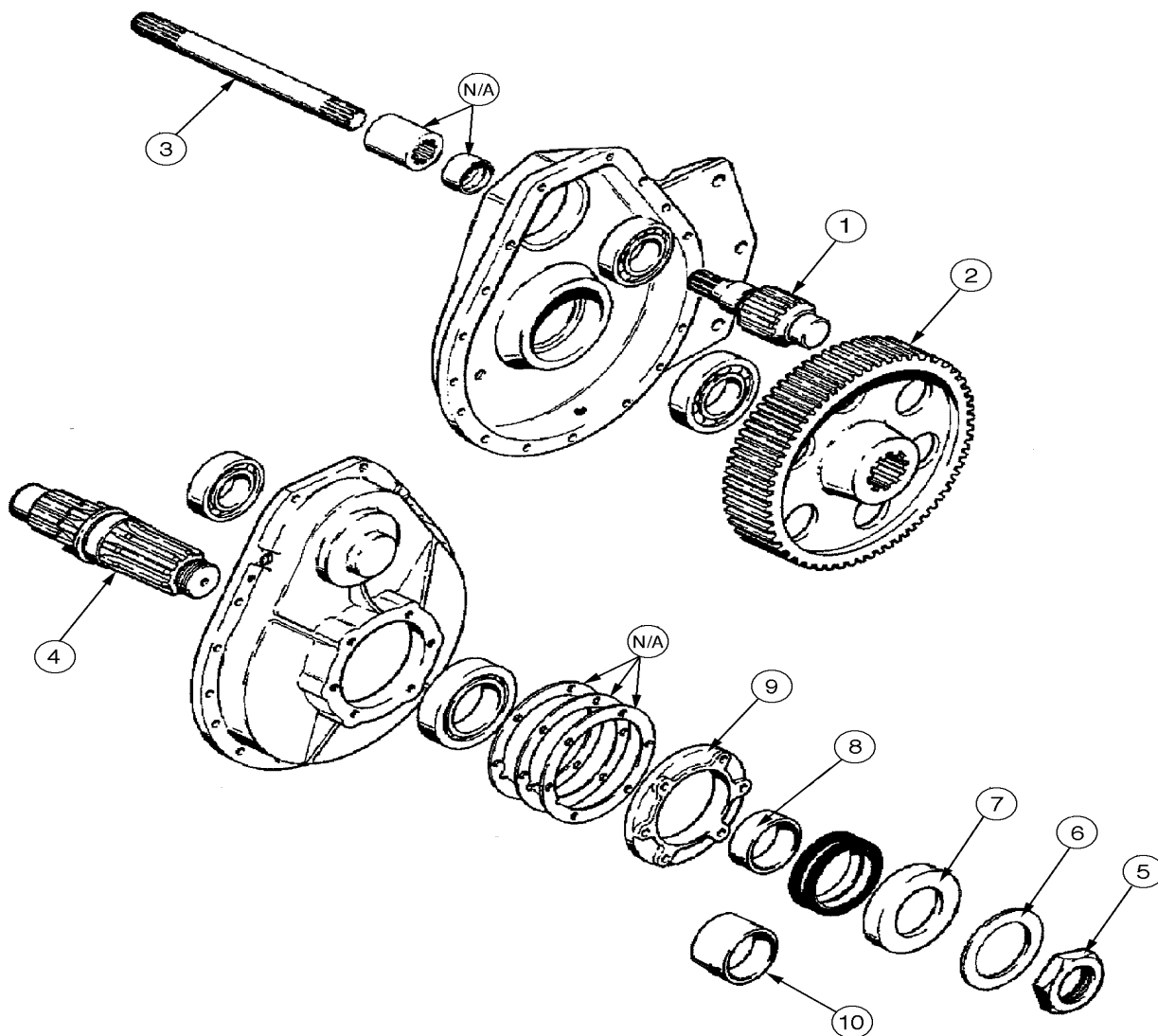
CASE	J8, J9
JOHN DEERE	J10

TRANSMISSIONS

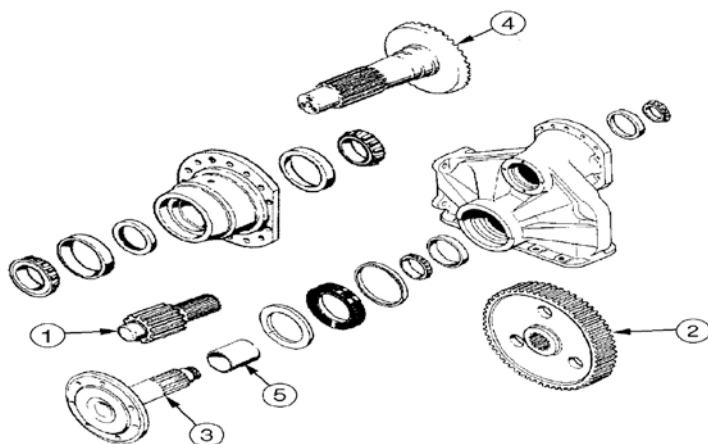
CASE	J9
JOHN DEERE	J10
DRESSER	J10
CAT	J10

TRANSMISSION DISCS

J11, J12

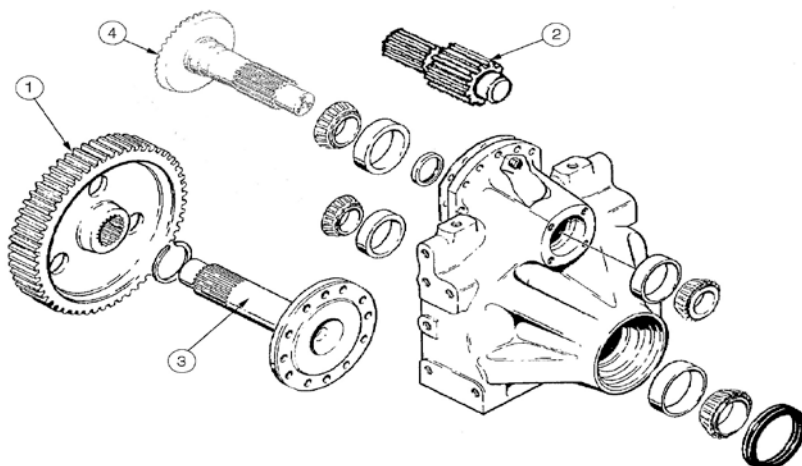


Ref.	Part No.	Description	Notes	Qty.	lbs.
Case 310, 350, 350B					
	R25584	Ring & Pinion		1	14
1	11832	Pinion	6 Spline	2	7
1	D31514	Pinion	10 Spline	2	6
2	11833	Bull Gear		2	28
3	11845	Shaft	Final drive to transmission, 6 & 10 Spline	2	5
3	D31519	Shaft	Final drive to transmission, 10 Spline	2	6
4	11853	Sprocket Shaft		2	17
5	D29126	Sprocket Nut		2	1.4
6	D29125	Washer		2	0.6
7	D43359	Seal Carrier		2	1.8
8	D43360	Spacer		2	1
9	D43356	Seal Carrier		2	5
10	PV410	Spacer	To install a 350 sprocket on a 310 machine	2	1.2
	PV701	Bearing & Seal Kit	310	2	10
	PV702	Bearing & Seal Kit	350, 350B	2	11



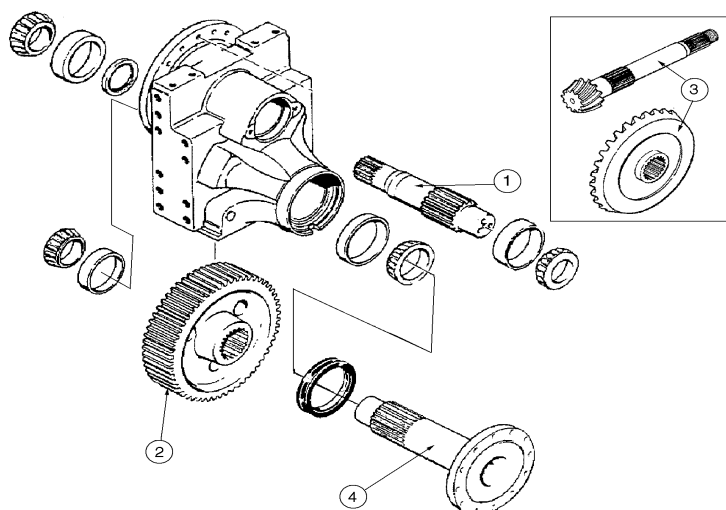
When placing an order for final drive parts, please have the model & serial number available to ensure accuracy.

Ref.	Part No.	Description	Notes	Qty.	lbs.
Case 450, 450B, 450C, 455B, 455C, 550, 550E, 550G					
1	A50143	Pinion	450, 450B, 455B	2	11
2	A50214	Bull Gear	2 21/32 ID Spline	2	67
3	A50484	Sprocket Shaft	No lip for seal, (10 1/4" overall length)	2	48
3	A51737	Sprocket Shaft	2 13/16 OD Spline, (11 1/2" overall length)	2	54
2	G101531	Bull Gear	3 5/64 ID Spline	2	60
3	G105733	Sprocket Shaft	3 15/64 OD Spline	2	53
4	G107897	Bevel Gear	450C, 455C, 550, 550E, 550G	2	34
5	A50213	Spacer	450 to s/n 3060306	2	1.6
	PV411	Seal Spacer	To weld on housing	2	1.3
Case 450 to s/n 3038436, 850 to s/n 7074053, Seal Retainers					
	A50555	Ring & Seat Kit		2	2.8
	A50554	Ring Seat		2	0.5
	A50553	Seal Seat		2	0.3
	A50552	Seal		2	2



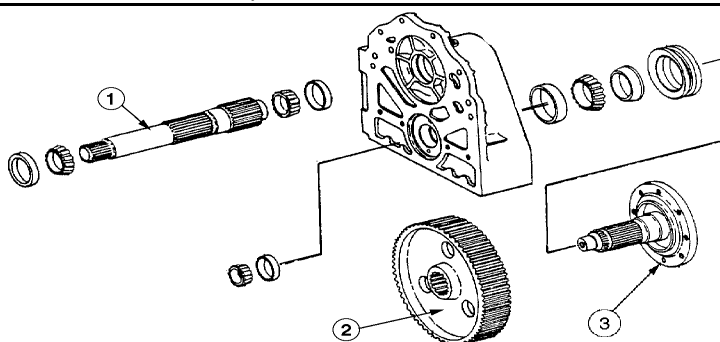
When placing an order for final drive parts, please have the model & serial number available to ensure accuracy.

Case 650, 650G, 850, 850B, 850C, 850D, 850E, 850G, 855C, 855D					
1	A50134	Bull Gear		2	96
3	G106477	Sprocket Shaft		2	60
2	A50143	Pinion	850	2	11
4	G107897	Bevel Gear	650, 650G, 850B, 855B, 850C, 855C, 850D, 855D, 850E, 855E, 850G	2	34
	PV412	Seal Spacer	To weld on housing	2	1



When placing an order
for final drive parts,
please have the model
& serial number
available to ensure
accuracy.

Ref.	Part No.	Description	Notes	Qty.	lbs.
Case 1150B, 1150C, 1150D, 1150E, 1150G, 1155E, 1450, 1450B					
1	G109013	Pinion Shaft		2	40
2	G100294	Bull Gear		2	114
3	G107899	Ring & Pinion R/H		1	54
3	G107902	Ring & Pinion L/H		1	54
4	A51451	Sprocket Shaft	1150B, 1150C, 1150D, 1150E, 1150G, 850C LGP	2	90
	G107943	Shaft	Planetary Drive, 1450B, 1455B	2	26
	A168166	Gear	Planetary Pinion, 1450B, 1455B	2	13
	A179586	Planetary Ring Gear	1450B, 1455B	2	64
1	A50318	Pinion	1150 Old Style	2	28
	PV412	Seal Spacer	To weld on housing	2	1



When placing an order
for final drive parts,
please have the model
& serial number
available to ensure
accuracy.

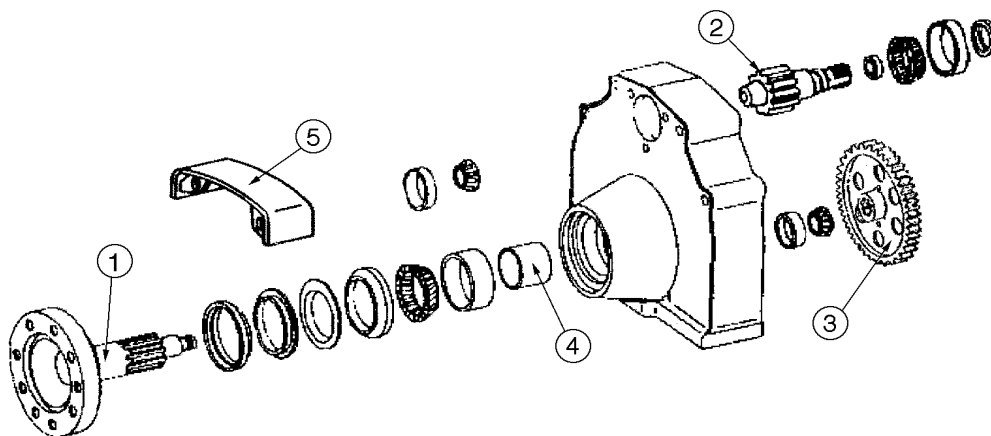
Dresser Final Drive Parts					
1	306578R1	Pinion	TD340	2	12
2	621109C1	Bull Gear	TD7C, TD7E, 100C, 100E	2	78
1	621111C1	Pinion	TD7C, TD7E, 100C, 100E	2	22
2	621116C2	Bull Gear	TD8C, TD8E, 125C, 125E	2	168
3	622244C2	Sprocket Shaft	TD8C, TD8E, 125C, 125E	2	54
1	621125C1	Pinion	TD8C, TD8E, 125C, 125E	2	22
1	636695R1	Pinion	500	2	13
2	636697R1	Bull Gear	500	2	37
1	676861R1	Pinion	500C	2	13
1	852522R1	Pinion	500E	2	13
2	676872R1	Bull Gear	500C, 500E	2	42
	676831C1	Clutch Base	500C	2	20
	850676C1	Clutch Base	500E	2	18

RING & PINIONS & TRANSMISSION PARTS

CASE

Part No.	Description	Notes	Qty.	lbs.
Case 480, 480B, 580, 580B Transmission Parts				
G13462	Shaft	Main, used with mechanical shuttle	1	3.7
A144339	Side Gear	Long	1	7
A144338	Side Gear	Short	1	6
A50996	Ring & Pinion Set	With Splined Hub, for machines with differential lock	1	31
A50996-997	Ring & Pinion Set	Without hub, with rivets	1	18
A39024	Pin	Differential pinion gear	1	1
A140280	Carrier L/H		1	13
A140279	Carrier R/H		1	13
A168925	Bull Gear		2	32
Case 480C, 480D, 580C, 580D Transmission Parts				
A50989	Side Gear	Long	1	7
A50990	Side Gear	Short	1	6
A51990	Ring & Pinion Set	480C with power shuttle, 480D to trans s/n 16270318	1	17
A51980	Ring & Pinion Set	580C, 580D without turbo 2WD	1	17
A142676	Pinion Gear		3	1
A146541	Pin	Differential pinion gear	3	1
A168926	Bull Gear		2	33
A51961	Gear	Second	1	
A148508	Main Shaft		1	5
A148194	Gear	Sliding, fourth	1	4
A168172	Gear	Sliding, first & second	1	3
A51939	Shaft	Input manual shift, 480C, 580C	1	7
A144361	Gear	Output, 480C, 580C	1	
A144266	Shaft	Differential cross shaft	1	9
Case 580E, 580K to s/n JJG0020000 Transmission Parts				
A168883	Ring & Pinion Set	Will also fit 480D after trans s/n 16270319	1	24
1342925C1	Side Gear L/H		1	9
1342927C1	Side Gear R/H		1	9
A156376	Shaft	Differential cross shaft	1	12
A179762	Pinion Gear		3	1
A153711	Pin	Differential pinion gear	3	1
A153751	Gear	First	1	8
A179853	Gear	Sliding, third	1	4
A168172	Gear	Sliding, first & second	1	3
A154936	Axle Shaft		2	56
A154940	Bull Gear		2	29
Synchronizer Assemblies				
A182240	Synchronizer	480E, 580K	1	3.8
A151114	Synchronizer	480C, 580C	1	4
A138655	Synchronizer	580C, 580D, 580E	1	4
L33333	Synchronizer	680 Series	1	3.4
L33334	Synchronizer	680 Series	1	7.5

Ref.	Part No.	Description	Notes	Qty.	lbs.
John Deere 420, 430 Final Drive Parts					
	M2362T	Pinion	To s/n 125000, 16 teeth	2	3
	T17846	Pinion	After s/n 125001, 14 Teeth	2	3
John Deere 350, 350B, 690B, 690C, 890, 990 Final Drive Parts					
	T23707	Pinion	1010, 350 to s/n 20538	2	3
	T24862	Pinion	350 after s/n 20538, 350B	2	4
	T29461	Bull Gear		2	35
	T24861	Pinion Shaft	350, 350B	2	6



John Deere 450, 450B, 450C, 450D, 450E, 455E, 550, 555 Final Drive Parts					
1	T61032	Sprocket Shaft	450B, 450C to s/n 356666, 550 & 555 to s/n 356813, 25 spline	2	65
1	T68003	Sprocket Shaft	450C after s/n 356666, 550 & 555 after s/n 356813, 64 spline	2	55
2	T20668	Pinion	450, 12 teeth	2	12
2	T31999	Pinion	450B, 450C, 450D, 450E standard track to Sn# 719252	2	14
2	T81193	Pinion	450E standard track after s/n 719253	2	13
2	T40859	Pinion	450E LT to s/n 719252, 550, 555, 550B & 555B to s/n 719252	2	12
2	T81195	Pinion	450E LT after s/n 719253, 550B & 555B after s/n 719253	2	12
3	T161934	Bull Gear	450B, 450C to s/n 356666, 25 spline	2	90
Also order T55233 Spacer to use with Bull Gear					
3	T161936	Bull Gear	450C after s/n 356666, 450D, 450E to s/n 719253, 64 spline	2	90
Also order T55233 Spacer to use with Bull Gear					
3	T68001	Bull Gear	550, 555	2	75
4	T20664	Spacer	450, 2.187"	2	0.8
4	T32001	Spacer	450B, 450C, 2.500"	2	0.7
4	T55233	Spacer	450D, 450E, 455D, 455E, 550B, 555, 555B, 3.125"	2	1
5	AT50847	Final Drive Guard Top		2	5
	T20713	Brake Drum	450	2	50
	T31730	Brake Drum	450B	2	50
	T37091	Shaft	450, 450B, 450C, 450D, 450E, 455E, 455D, 550, 550B, 555, 555B	2	10
	T148796	Bottom Cover		2	49
John Deere 655, 655B, 750, 750B, 755, 755B Final Drive Parts					
	T60239	Pinion	30 Teeth	6	25
	T46178	Pinion Shaft		2	17

TRANSMISSION & FINAL DRIVE PARTS

Part No.	Description	Notes	Qty.	lbs.
John Deere 550G, 650G, Final Drive Parts (For Double Reduction Final Drive)				
T105458	Pinion	22 teeth	2	18
T105459	Idler Gear	41 teeth	2	25
T105460	Idler Pinion	12 teeth	2	20
T162073	Bull Gear	53 teeth	2	83
John Deere 450H, 450J, 550H, 550J, 650H, 650J, Final Drive Parts				
T169138	Spur Gear	Second idler pinion	2	14
John Deere 350, 350B, 350C, 350D Transmission Gears				
T34352	Shaft	Transmission input	1	10
T34905	Shaft	Shuttle Output	1	7
T14923	Coupler	For above shafts	1	2
T16598	Cluster Gear	23-27-34 Teeth	1	9
AT14446	Steering Gear	22-24-42 Teeth	1	10
T16326	Gear	Second and reverse	1	3
T37064	Gear	Second, without winch drive or PTO	1	2
T14210	Gear	First and Fourth, 28 Teeth	1	3
T20868	Gear	Third, 36 Teeth	1	3
T19462	Gear	Third, 15 Teeth	1	1
T19222	Gear	Fourth, 23 Teeth	1	2
T23653	Shaft	Transmission input, 1010, 350	1	11
John Deere 450B, 450 Transmission Parts				
AT80834	Drive Shaft	Front	1	10
John Deere 210C, 310-A-B-C-D, 410-B, 401-C-D				
T38506	Planetary Pinion Carrier	Old Style	1	16
T149082	Planetary Pinion Carrier	New Style	1	16
AC HD3, HD4, 653, 655 Final Drive Parts				
70233717	Pinion		2	17
70233724	Bull Gear		2	30
TD7, TD8, 100, 125 Planetary Pinions				
629839C1	Gear	Planetary Pinion	6	1
716939C1	Shaft	Planetary Pinion Gear	6	1
Case 880-980-B Drott 35-40-50 Final Drive Parts				
S242413	Pinion		2	2
S609333	Pinion		2	2
S603740	Gear		2	25
S603741	Gear		2	36
S612550	Pinion		2	4
S616256	Shaft		2	27
S242157	Rex Bearing	Sprocket shaft	2	15
S242158	Rex Bearing	Sprocket shaft	2	24
S209721	Rex Bearing	Sprocket shaft	2	15
PV715	Bearing & Seal Kit	Final Drive	2	8

FINAL DRIVE BEARING KITS

Part No.	Description	Notes	Qty.	lbs.
Case Final Drive Bearing & Seal Kits				
PV701	Bearing Kit	310	2	10
PV702	Bearing Kit	350, 350B	2	11
PV703	Bearing Kit	450 to s/n 3038435	2	7
PV704	Bearing Kit	450 after s/n 3038436, 450B	2	9
PV705	Bearing Kit	Pinion carrier bearing set, 450, 450B	2	5
PV706	Bearing Kit	450C, 455C	2	13
PV707	Bearing Kit	850	2	11
PV708	Bearing Kit	850B, 850C, 850D, 850E, 855C, 855D	2	15
PV709	Bearing Kit	1150 to Trans. s/n 2663630	2	21
PV710	Bearing Kit	1150 after Trans. s/n 2663631	2	22
PV711	Bearing Kit	1150B, 1150C, 1150D, 1150E, 1155D, 1155E	2	29

John Deere Final Drive Bearing & Seal Kits				
PV720	Bearing Kit	420	2	6
PV721	Bearing Kit	440 to s/n 456800	2	6
PV722	Bearing Kit	440 after s/n 456801	2	7
PV723	Bearing Kit	1010 to s/n 31000	2	7
PV724	Bearing Kit	1010 after s/n 31001	2	8
PV732	Bearing Kit	2010	2	9
PV725	Bearing Kit	350 to s/n 20538	2	8
PV726	Bearing Kit	350 after s/n 20539, 350B	2	8
PV731	Bearing Kit	350C, 350D, 400G	2	8
PV727	Bearing Kit	450 used with T20668 Pinion	2	9
PV728	Bearing Kit	450B, 450C to s/n 388460	2	9
PV729	Bearing Kit	450C after s/n 388460, 450D, 450E to s/n 719252, 455C, 455D, 455E to s/n 719252	2	9
PV730	Bearing Kit	550 to s/n 388459, 555 to s/n 388459	2	10
PV733	Bearing Kit	450E after s/n 719253, 455E after s/n 719253, 450E LT, 450E WT, 550 after s/n 388460, 550A, 550B, 555 after s/n 388460, 555A, 555B	2	
PV737	Bearing Kit	450G, 450G LT, 455G, 555G, 450G WT to s/n 795142	2	
PV738	Bearing Kit	450G WT after s/n 795143	2	14
PV739	Bearing Kit	550G, 650G, to s/n 785187	2	17
PV740	Bearing Kit	550G, 650G, after s/n 785188	2	19
PV742	Bearing Kit	450H, 550H, 650H	2	

Dresser Final Drive Bearing & Seal Kits				
PV735	Bearing Kit	TD7, TD7C, TD7E, 100, 100C, 100E	2	9
PV736	Bearing Kit	TD8, TD8C, TD8E, 125, 125C, 125E	2	9

Allis Chalmers Final Drive Bearing & Seal Kits				
PV741	Bearing Kit	HD3, HD4, 653, 655	2	

Final Drive Bearing Kits Include All Bearings & Seals, Please Have Model & S/N Ready When Ordering

TORQUE CONVERTERS & PARTS

CASE

Part No.	Description	Notes	Qty.	lbs.
Case 350, 350B Torque Converter & Shuttle				
103293A1R	Torque Converter	Loader	1	30
R41643R	Torque Converter	Dozer	1	30
R43949R	Shuttle Assembly		No Longer Available	
574142	Rebuild Kit	For Shuttle	1	10

Case 450, 450B Torque Converter				
D52422R	Torque Converter	With ring on housing, (R & R only)	1	71
R42395R	Torque Converter	Flex Plate Style	1	71
N14072	Rotating Housing	Flex Plate Style	1	

Case Torque Converters		Rebuilt		
PV220R	Torque Converter	850, 850B, 850C Dozer 1150B, 1150C, 1155D Loader	1	77
PV221R	Torque Converter	850, 850B, 850C, 855C, Loader	1	77
PV222R	Torque Converter	1150, 1150B, 1150C, 1150D, 1450, 1450B Dozer, 1150 Loader	1	77
PV223R	Torque Converter	1450, 1455B, Loader	1	77
PV224R	Torque Converter	850D Dozer, 1155E Loader	1	77
PV225R	Torque Converter	855D Loader	1	77
PV226R	Torque Converter	1150E Dozer	1	77

Case Torque Converters		New		
PV220	Torque Converter	850, 850B, 850C Dozer 1150B, 1150C, 1155D Loader	1	77
PV221	Torque Converter	850, 850B, 850C, 855C, Loader	1	77
PV222	Torque Converter	1150, 1150B, 1150C, 1150D, 1450, 1450B Dozer, 1150 Loader	1	77
PV223	Torque Converter	1450, 1455B, Loader	1	77
PV224	Torque Converter	850D Dozer, 1155E Loader	1	77
PV225	Torque Converter	855D Loader	1	77
PV226	Torque Converter	1150E Dozer	1	77

TORQUE CONVERTER PARTS

850, 850B, 850C, 850D, 855C, 855D, 1150, 1150B, 1150C, 1150D, 1150E, 1155E, 1450, 1450B, 1455, 1455B				
D31934	Impeller		1	8.6
D31935	Turbine		1	7.2
D48856	Impeller		1	9
D37376	Impeller		1	8.9
D49383	Impeller		1	9
D75861	Torque Hub		1	7
D32026	Output Shaft		1	7
D75862	Gear	With sleeve	1	3
D32003	Gear	Torque driven	1	3
D78330	Gear	Hydraulic pump drive 15 Spline	1	2.2
R46562	Gear	Hydraulic pump drive 14 Spline	1	1
D32015	Pilot	Flywheel, for case engines	1	4.6
N9775	Pilot	Flywheel, for cummins engines	1	5.6
D31936	Guide Wheel	Loader models only	1	4.3
D37377	Guide Wheel	Dozer models only	1	4.4
N8410	Rotating Housing	For case engines	1	42
N9777	Rotating Housing	For cummins engines	1	40

TRANSMISSIONS, SHUTTLE ASSEMBLIES, & PUMPS

CASE

Part No.	Description	Notes	Qty.	Lbs.
Case Torque Converter & Transmission Pumps				
D35016	Pump	450, 450B	1	4.8
R30678	Pump	850, 850B, 850C, 850D, 855C, 1150	1	7.3
137093A1	Shuttle Pump	350, 580C, 580D, 580E, 580K	1	9
119994A1	Pump	550E, 550G, 550H, 650G, 650H, 750H, 850E, 850G, 850H, 855E, 580SK, 590	1	4
181199A4	Pump	570L, 580L & SL, 580M & SM, 585G, 586G, 588G		
John Deere Transmission Pumps				
AT44150	Transmission Pump	550, 550A, 550B to s/n 719977, 555, 555A, 555B to s/n 720212	1	20
AT44151	Pressure Relief Valve	550, 550A, 550B to s/n 719977, 555, 555A, 555B to s/n 720212	1	0.5
Dresser Transmission Pumps				
625000C91	Pump	TD7, TD7C, TD7E, TD8, TD8C, TD8E (to s/n 9500 on E models) 100, 100C, 100E, 125, 125C, 125E, (to s/n 9500 on E models)	1	16.6
Case 580, 580B				
A51166R	Shuttle Pack	Twin Disc	1	42
A39521R	Torque Converter		1	75
A38133R	Shuttle Pack	Rockford	1	34
Case 480C, 480D, 480E, 580C, 580D, 580E, 580K, 584E, 585E, 586E				
103293A1R	Torque Converter	Cores marked with SR, SN, or TG will not receive core credit	1	30
D75694R	Shuttle Assembly, REBUILT	480C, 480D, 480E, 580C, 580D, 580E	1	117
D102905R	Shuttle Assembly, REBUILT	580K	1	117
D140175	Shuttle Assembly, NEW	Will replace D75694, D102905	1	140
574136	Rebuild Kit	Shuttle	1	10
D103219	Disc Kit	Shuttle	1	5.5
1995137C1R	Torque Converter	550E, 550G, 550H, 580SK, 580SL, 580SL Ser. 2, 580SM, 590, 590SL, 590SL Ser 2, 590SM	1	38
Case 580E, 580K to s/n JJG0020000				
PV247R	Transmission Assembly	2WD, without axles & bullgears	1	725
PV248R	Transmission Assembly	4WD with transfer case, without axles & bullgears	1	840
PV249R	Transmission Assembly	4WD without transfer case, axles & bullgears	1	750
PV250R	Transfer Case	4WD, for PV249R Transmission	1	90
A179007	Gear	Input, 14 teeth	1	5.4
A156256	Gear	Idler, 17 teeth	1	5
PV251R	Front Axle	4WD Drive	1	530
Case 450, 450B				
G101940R	Transmission Assembly	Without Final Drives	1	792
Case W11-B-W14-W20-B				
PV239R	Transmission Assembly	Without torque W11, W11B	1	565
L55662R	Transmission Assembly	With Torque W14	1	700
D47456R	Driven Gear	Rebuilt	1	14
D47456	Driven Gear	New	1	14
L35003	Free Wheel Clutch Kit		1	10
N7770	Charge Pump		1	23
PV254R	Transmission Assembly	With Torque W24B	1	750

TRANSMISSION & SHUTTLES**JOHN DEERE, CAT, & DRESSER**

Part No.	Description		Qty.	lbs
John Deere Transmissions				
PV230R	Shuttle Pack	350, 350B, 350C, 350D	1	61
PV231R	Shuttle Pack	450	1	60
AT104145R	Shuttle Pack	450B, 450C, 450D, 450E, 455D, 455E	1	71
AR30480R	Manifold	450, Marked R32696	1	7.7
AR40934R	Manifold	450, Marked R41331	1	7.7
AR48384R	Manifold	450B to s/n 142199, Marked R46220	1	7.7
AR56620R	Manifold	450B, 450C, 450D, 450E, 455D, 455E, Marked R52036	1	7.7
John Deere Shuttles, Loader Backhoes				
AT163729R	Shuttle Assembly	210C, 310C, 315C, 482C	1	120
574136	Rebuild Kit	210C, 210D, 310C, 310D, 315C, 482C	1	10
AT100842R	Torque Converter		1	30
PV261R	Shuttle Assembly	With Housing 410B, 410C, 510, 510B, 510C, 610C	1	365
John Deere 550, 550B to s/n 719977, 555, 555B to s/n 720212				
PV233R	Transmission Assembly		1	675
PV232R	Torque Converter		1	53
AT44150	Transmission Pump		1	20
John Deere 444, 544-ABC				
AT73766R	Transmission Assembly		1	785
AT69097R	Free Wheel Clutch & Gear	New Clutch, Rebuilt Gear	1	24
T72081R	Gear		1	14
AT72878	Charge Pump		1	23
PV255R	Transmission Assembly	440 Skidder, Power Shift	1	1400
Dresser TD7, TD8, 100, 125				
PV237R	Torque Converter	TD8C, TD8E to s/n 9500	1	52
PV238R	Torque Converter	125C, 125E to s/n 9500	1	41
PV235R	Transmission Assembly	TD7C, TD7E to s/n 9500, 100C, 100E to s/n 9500	1	560
PV234R	Transmission Assembly	TD8C, TD8E to s/n 9500, 125C, 125E to s/n 9500	1	584
Cat Transmissions				
PV240R	Transmission Assembly	With Torque 910	1	695
PV252R	Transmission Assembly	With Torque 920	1	1325
PV246R	Transmission Assembly	With Torque D3, 931 (1 speed Reverse)	1	510
PV245R	Transmission Assembly	With Torque D3B, D3C, 931B (3 speed Reverse)	1	850
1T1045	Torque Converter	D3B, D3C, 931B	1	42
PV263R	Transmission Assembly	With Torque 941B	1	1173
PV253R	Transmission Assembly	With Torque 518	1	1270

TRANSMISSION DISCS

CASE

Part No.	Description		Qty.	Lbs
Case 480, 580, 580B				
A41355	Metallic Disc	Rockford	10	0.1
A41005	Steel Disc	Rockford	10	0.2
A42854	Metallic Disc	Twin Disc	10	0.2
A42855	Steel Disc	Twin Disc	10	0.3
Case 350, 350B, 480C, 480D, 480E, 580C, 580D, 580E, 580K to s/n JJG0020000				
D70672	Metallic Disc	480C, 480D, 480E, 580C, 580D, 580E, 580K to s/n JJG0020000	7	0.1
D50082	Metallic Disc	350, 350B	7	0.1
D50083	Steel Disc		6	0.2
D50040	Metallic Disc		3	0.5
D50041	Steel Disc		2	0.4
G102354	Metallic Disc	450, 450B, 455B, 450C, 455C, 550, 850B, 850C, 850D, 855C,	24	1.1
G101711	Steel Disc	855D, 1150B, 1150C, 1150D, 1155D, 1150E, 1155E, 1150G, 1150H	24	0.8
Case 550E, 550G, 550H, 650G, 850E, 855E, 850G, 580K after s/n JJG0020000, 580SK, 590				
A188946	Metallic Disc		22-24	0.1
A175806	Steel Disc		22-24	0.3
Case 570LXT, 580L, 580SL, 580M, 580SM, 590SL, 590SM				
181158A1	Metallic Disc		12	0.2
181159A1	Steel Disc		14-16	0.3
Case 1150D, 1155D, 1150E, 1150G, 1150H, 1155E, 1450B				
A67156	Steel Disc		9	0.4
A50631	Steel Disc	ALSO FITS 1150B, 1150C, 1450, 1455B	10	0.4
N7022	Metallic Disc	W14, W18, W18B, W20, W20B, W20C, W24C	9	0.9
N7219	Metallic Disc	W11B, W14B, W14C, 680H, 680K, 680L, 780B, 780C, 780D	8	0.1
N7217	Metallic Disc	W11B, W14B, W14C, 680H, 680L, 780B, 780C, 780D	28	0.2
A17921	Steel Disc	W7, W8B, W8C, 780	20	0.2
103310A1	Steel Disc	W7, W8B, W8C, 780	20	0.2
D55252	Metallic Disc	W7, W8B, W8C, W36, 780, 621	24	0.3
D77063	Metallic Disc	W36, 780, 621	30	0.3

TRANSMISSION DISCS**JOHN DEERE, DRESSER, & CAT**

Part No.	Description	Qty.	lbs
John Deere			
T15801	Metallic Disc 1010, 350, 350B, 350C, 350D	12	0.4
T15793	Steel Disc 1010, 350, 350B, 350C, 350D	12	0.3
R57345	Steel Disc 400G, 450, 450B, 450C	15	0.5
R31404	Metallic Disc 450D, 455D, 450E, 455E	12	0.5
AR94516	Metallic Disc 310, 310A, 310B, 410, 500C, 510, 410B, 510B	7	0.5
RE23000	Metallic Disc 410C, 410D, 510C, 610B, 610C, 710B, 710C	9	0.5
T44805	Metallic Disc 550, 550B, 555, 555B	32	0.4
T44804	Steel Disc 550, 550B, 555, 555B	27	0.3
AR39128	Metallic Disc 300, 301, 401	7	0.1
T67544	Metallic Disc 444C, 444D, 544C, 544D, 644B, 644C, 644D	9	0.9
Dresser 100C, 125C, TD7C, TD8C, (100E, 125E, TD7E, TD8E, to s/n 9500)			
324241R1	Steel Disc	37-47	0.2
324240R1	Metallic Disc	42-52	0.1
675667R1	Metallic Disc	42-52	0.1
187109H1	Metallic Disc	42-52	0.1
702959C1	Metallic Disc	42-52	0.1
Dresser TD7G, TD8G, (100E, 125E, TD7E, TD8E, after s/n 9501)			
716719C1	Steel Disc	29	0.1
709777C1	Metallic Disc	34	0.1
Cat D3, D3C, D4C, D5C			
6Y7934	Metallic Disc		0.1
6Y7935	Metallic Disc		0.1
9P6903	Steel Disc		0.3
9P7101	Steel Disc		0.9