

Auctions

No Reserve: 1993 Dodge Power Ram 350 LE Turbodiesel Dually 4×4 5-Speed

\$18,500 3 days



BID & COMMENT



BaT Essentials

Lot #42771

Seller: **MeHPAS**

Location: **Phoenix, Arizona 85029**

Chassis: 3B7MM33C3PM145697

83k Miles Shown

5.9L Cummins Turbodiesel Inline-Six

5-Speed Manual Transmission

2-Speed Transfer Case

Repainted White/Gray in 2020

Gray Cloth Interior

Power Windows & Locks

Spray-On Bed Liner

KYB Shocks

Clean Carfax Report

Private Party Or Dealer: Private Party

Category: **American, Truck & 4x4**

✉ CONTACT SELLER



This 1993 Dodge Power Ram 350 is an extended-cab dually 4x4 pickup that has been registered in California and Arizona since new. Power is from a 5.9-liter Cummins turbodiesel inline-six linked to a five-speed manual transmission and a two-speed transfer case. The truck reportedly remained with its original owner until last year and was acquired by the seller from his brother in November 2020. It is finished in white with a gray center section over a gray cloth interior, and equipment includes power windows and locks, 16" wheels, running boards, and a bed liner. This Power Ram dually pickup now shows 83k miles and is offered at no reserve with partial service receipts, a clean Carfax report, and a clean Arizona title in the seller's name.



The Club Cab bodywork and bed were repainted in white with a gray center section and red pinstripes in September 2020, and the resulting finish is shown up close in the photo gallery below. A spray-in bed liner was subsequently applied by Inyati Bedliners of Phoenix, Arizona, and additional accessories include a front bug deflector, running boards, cab lights, chrome rearview mirrors, and a rear receiver hitch.



The 16" steel wheels wear Michelin Defender LTX M/S tires measuring 235/85 and were installed in July 2016 at 74k miles. KYB shocks were installed in November 2020.



The cab features gray cloth captain's chairs as well as vinyl rear jump seats. Amenities include a center console with cupholders, power windows and locks, cruise control, and a cassette stereo.



A three-spoke steering wheel fronts instrumentation including a 100-mph speedometer that contains a six-digit mechanical odometer showing just under 83k miles, around 500 of which have been added under current ownership. Three additional aftermarket gauges, including a tachometer, are mounted on top of the dash.



The 5.9-liter Cummins 6BT turbodiesel inline-six was factory-rated at 160 horsepower and 400 lb-ft of torque when new and features an intercooler. The valve cover gasket and coolant are said to have been replaced in 2020, and an oil change was also performed.

Power is sent to the rear or all four wheels through a Getrag five-speed manual transmission, a two-speed transfer case, a Dana 60 front axle, and a Dana 70 rear axle with a limited-slip differential. Additional underbody photos are provided in the gallery.

Snapshot

1993 DODGE W-SERIES W300/W350

- No accidents or damage reported to CARFAX
- **3** Previous owners
- **5** Service history records
- Commercial vehicle
- Last owned in Arizona
- **82,578** Last reported odometer reading

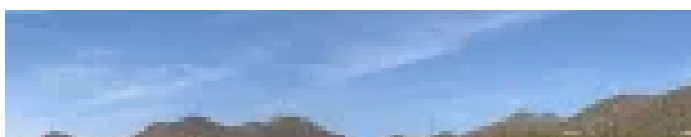
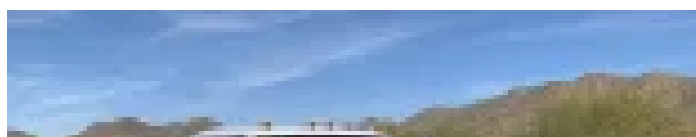
FREE CARFAX Report

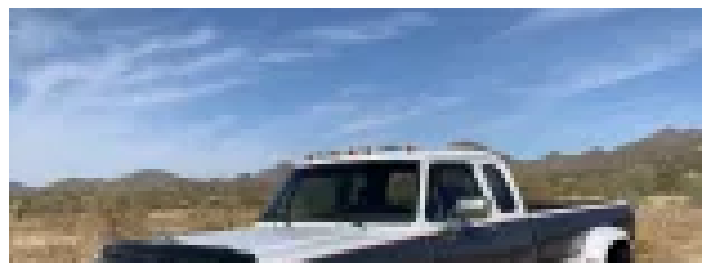
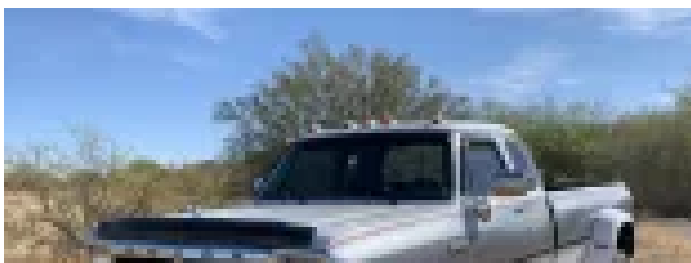
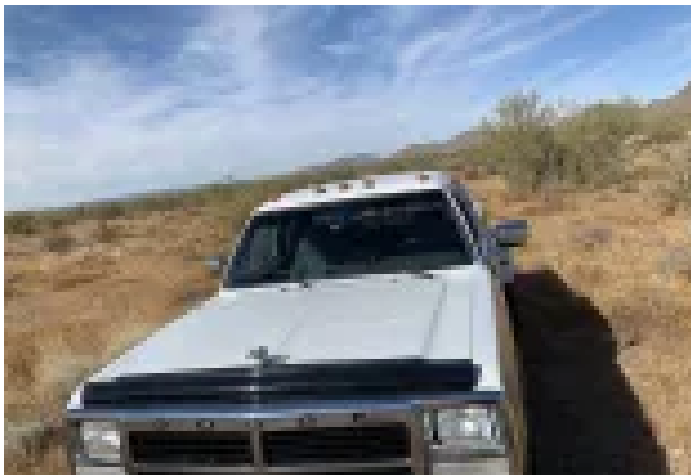
See the full CARFAX Report for additional information

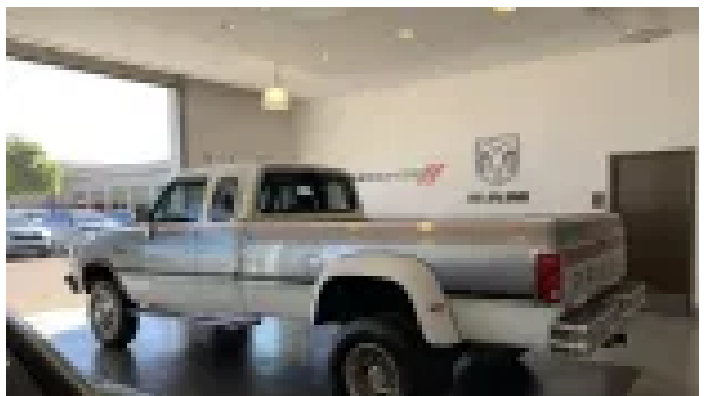
The Carfax report shows no accidents or other damage and lists California and Arizona registration between 1993 and 2020. Walk-around and interior tour videos are provided below.

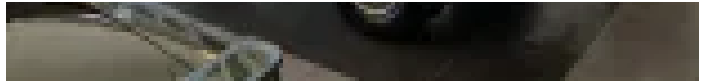


PHOTO GALLERY





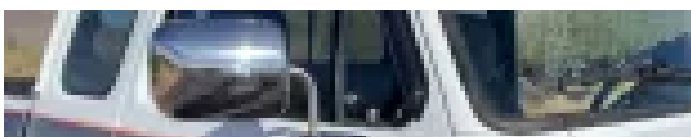
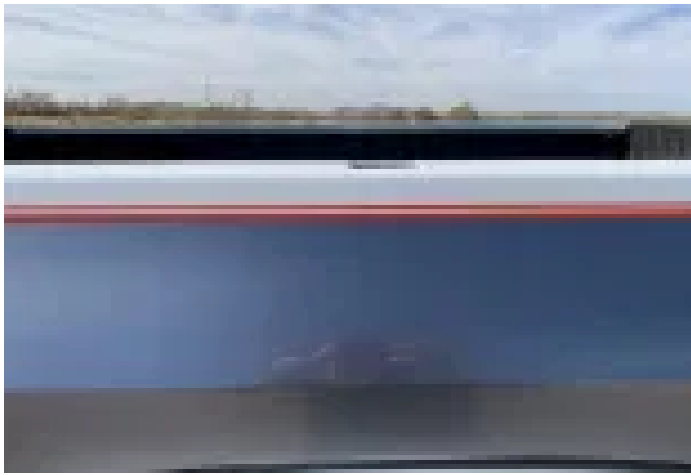


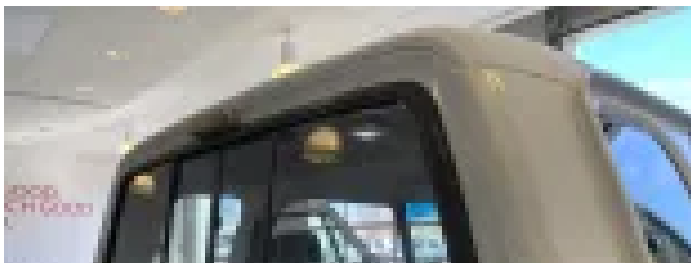
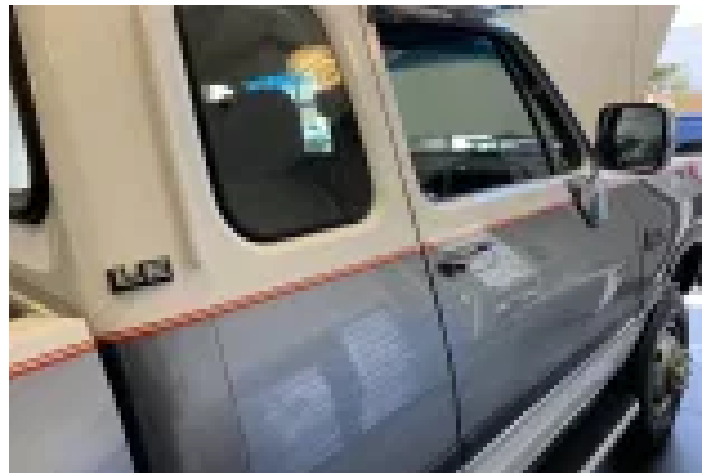
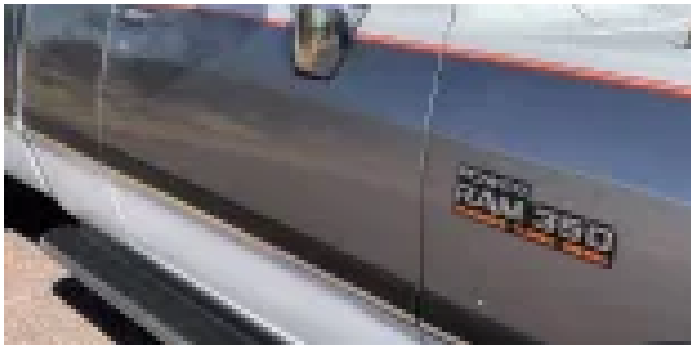


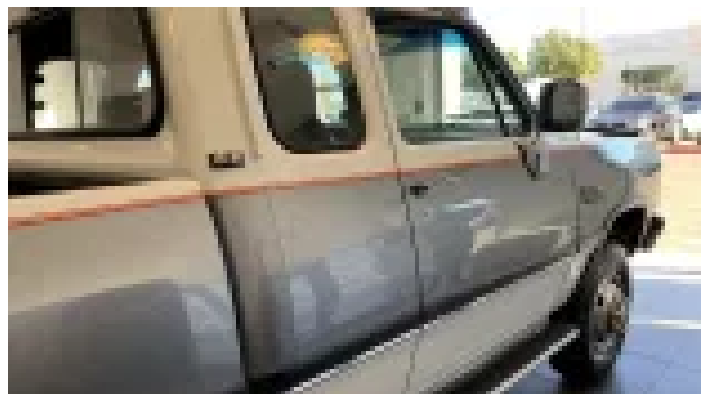
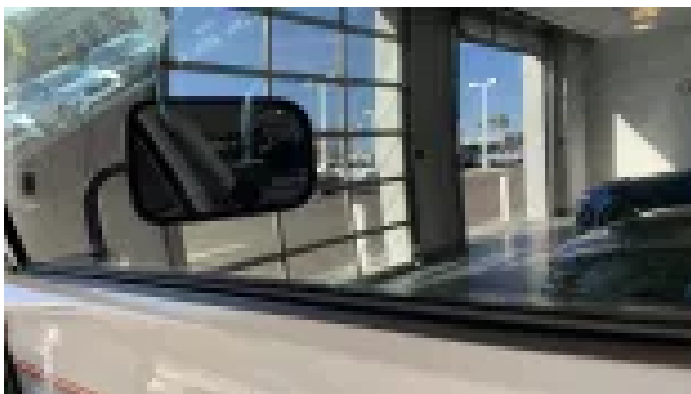
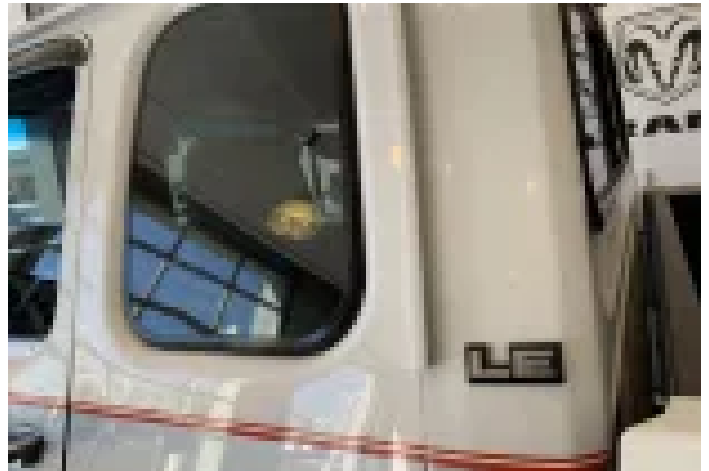
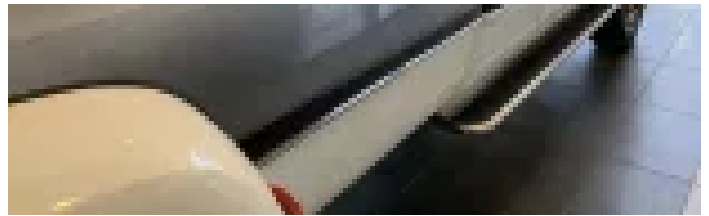


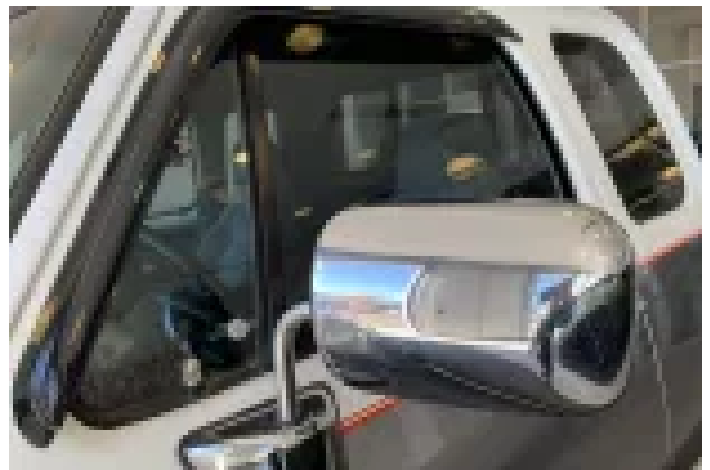
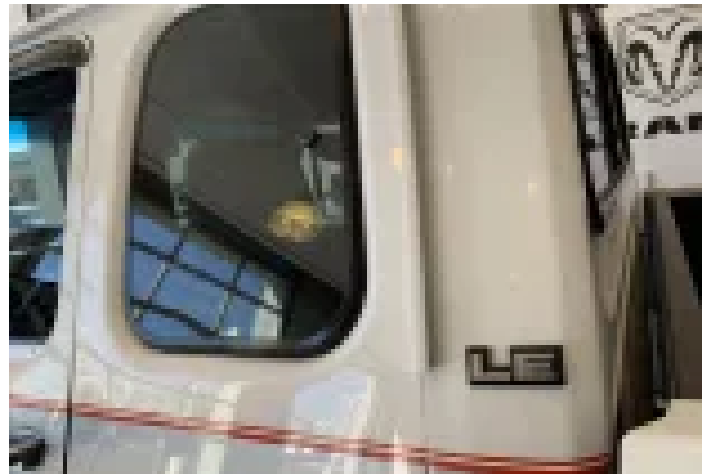
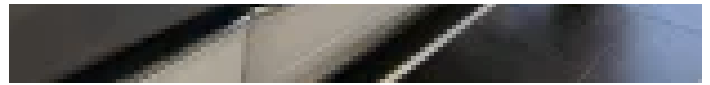


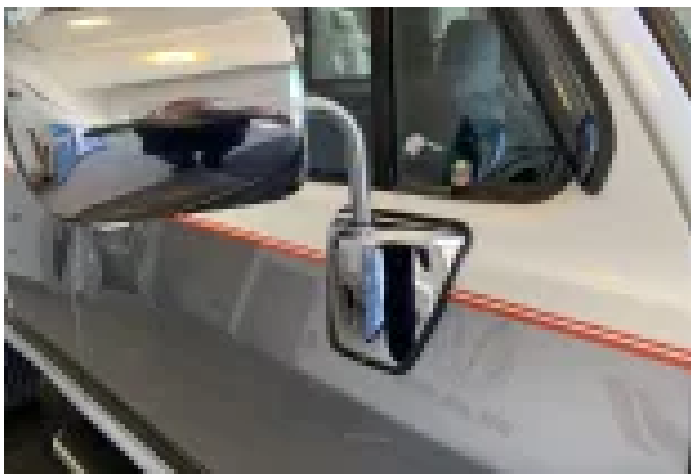
















+104

BID ON THIS VEHICLE

Current Bid	USD \$18,500 by chughes1598
Time Left	3 days, 3 hours, 37 minutes, 22 seconds *
Ends On	Friday, February 5 at 5:14pm remind me

Bids 14

Place Bid

REGISTER TO BID

[How bidding works](#) | [Watch auction](#)

6,291 views | 476 watchers

22 COMMENTS

Add a comment here

[Keep me in this conversation via email](#)


SUBMIT

Feb 1 at 6:56 PM
\$18,500 bid placed by chughes1598

Feb 1 at 6:53 PM
\$16,000 bid placed by Justinf350


Feb 1 at 3:06 PM
\$15,500 bid placed by Brookeo

Feb 1 at 12:34 PM
\$15,250 bid placed by billjo34

Feb 1 at 11:08 AM
MelHPAS (The Seller)  156



 2 [Flag as not constructive](#)

Feb 1 at 11:02 AM
MelHPAS (The Seller)  156

@billjo I had the truck detailed before the pictures were taken, The detail shop sprayed cleaners around the wheels in the areas accessible around the tires. I have not painted anything on this frame.



2 Flag as not constructive

Feb 1 at 7:07 AM

billjo34 0

Was the front section of the frame painted? It looks shinier than the midsections? If so could you tell us why?



0 Flag as not constructive

Jan 31 at 10:17 PM

\$15,000 bid placed by Andy333

Jan 31 at 8:59 PM

\$14,000 bid placed by shade

Jan 31 at 8:35 PM

\$13,500 bid placed by Crowdog

Jan 31 at 8:19 PM

HR_Payne 3

Man. Such a beauty. If I hadn't bought a truck in October I would bid on this one. Dear baby Jesus; I want one of these for Christmas. I've been a good boy

Glwta!



1 Flag as not constructive

Jan 31 at 4:22 PM

MelHPAS (The Seller) 156

@billjo34 this truck has 3:54 gear ratio

@Trackhawk707 I don't see any service records regarding the clutch but feels strong, no issues.

@tysonhugie thank you, much appreciated



0 Flag as not constructive

Jan 31 at 4:09 PM

tysonhugie 1,200

This pickup is undoubtedly one of the most rare configurations left on the road, not to mention in incredible shape. I am local to the truck and have seen and driven it. The body and paint are remarkable, and it runs and drives as nice as it looks. The panel gaps are nice, the undercarriage is rust-free, and everything works – even cold A/C. The seller is a detail-oriented individual with expertise in these trucks, so I would not hesitate to recommend bidding if you are in the market. Hope this one goes to a good home – best of luck to all who are considering this beauty.



2

Flag as not constructive

Jan 31 at 10:36 AM

Trackhawk707 0

Do you know if the clutch has ever been replaced?



0

Flag as not constructive

Jan 31 at 8:07 AM

billjo34 0

3.54 or 4.10 rear?



0

Flag as not constructive

Jan 30 at 9:01 PM

AutoTraitor 881

Wow, only 82k miles? Multiply that by 10 and she'll be "broken in".
Super clean truck, will bring all the money.



1

Flag as not constructive

Jan 30 at 4:07 PM

\$13,000 bid placed by 79LilRed

Jan 30 at 1:13 PM

MelHPAS (The Seller) 156

@GBRBIII this is a 12 Valve. The 24 valves were later offered on 2nd gen Dodge Ram Diesels starting in 98.5 +



1

Flag as not constructive

Jan 30 at 12:57 PM

GBRBIII  1,068

Is the 2 valve per cylinder version of this engine or the 4 valve?

 0

[Flag as not constructive](#)

Jan 30 at 12:25 PM

\$12,000 bid placed by bocaautoworks

Jan 30 at 11:25 AM

Eric_E.  667

[@MelHPAS](#) . Thanks for that. GLWTA.

 1

[Flag as not constructive](#)

Jan 30 at 11:10 AM

\$11,750 bid placed by JHN

Jan 30 at 10:51 AM

MelHPAS (The Seller)  156



 0

[Flag as not constructive](#)

Jan 30 at 10:40 AM

MelHPAS (The Seller)  156

Eric_E. The front 2 center caps are off a Dodge Ram D350 I believe, they were on it when we bought it. I searched trying to find OEM W350 caps with opening hole and didn't see much options besides aftermarket wheel stimulators with opening center. I've seen owners on different sites cut out a circle on the circled line, or removed. I left it the way it is.



Flag as not constructive

Jan 30 at 9:57 AM

Eric_E. 667

@MelHPAS . How does one access the Front Locking Hubs with Screwed on Hubcaps covering them?



Flag as not constructive

Jan 30 at 12:25 AM

Oglukemook 3

My favorite Gucci mane line "dually truck so f***** long the valet don't know how to park it"



Flag as not constructive

Jan 29 at 10:16 PM

\$10,000 bid placed by bocaautoworks

Jan 29 at 9:31 PM

MelHPAS (The Seller) 156

Good evening, thx for the comments and bids, @RiffRaff yes it is equipped with a brake controller. @aleeka thank you for the kind words.



Flag as not constructive

Jan 29 at 9:22 PM

\$8,000 bid placed by CountryBoyClassics

Jan 29 at 8:48 PM

aleeka 71

I purchased a 1993 Dodge Ram 350 extended cab Dually from the seller last year. I can tell you that @MelHPAS puts his heart and soul into the proper restoration of these beauties. I couldn't be happier with my truck. If I can purchase a hidden barn unbeknownst to my wife in the next week, I'll definitely bid on this one.



Flag as not constructive

Jan 29 at 8:38 PM

\$5,000 bid placed by bocaautoworks

Jan 29 at 7:59 PM

\$1,993 bid placed by scoutman

Jan 29 at 6:21 PM

RiffRaff  5,391

Veeerrrrry nice truck. Inyati rules. Is that a brake surge gizmo under the dash? Love the long bed, the 1-ton capacity, and the 4 X 4. GLWTS.

 2

[Flag as not constructive](#)

Jan 29 at 6:14 PM

david42  2,339

How many other cars can you think of where the torque number is more than 2x horsepower???

 5

[Flag as not constructive](#)

[VIEW MORE](#)



About BaT



[Gear Store](#)

[Charity Auctions](#)

[BaT Event Calendar](#)

[Resources](#)

[Jobs](#)

[FAQ](#)

All contents © 2020 The best vintage and classic cars for sale online | [Bring a Trailer](#)

[Privacy Notice/Notice at Collection](#) | [Your California Privacy Rights](#) | [Interest Based Ads](#) | [Terms of Use](#)

[Do Not Sell My Personal Information](#)